

# CI U.S. Stock Selection Corporate Class

Series A USD



AS AT FEBRUARY 29, 2024

## FUND OVERVIEW

This fund invests primarily in equity and equity-related securities of companies in the United States.

## FUND DETAILS

|  |                               |
|--|-------------------------------|
| Inception date                                   | July 2001                     |
| CAD Total net assets (\$CAD)<br>As at 2024-02-29 | \$546.9 million               |
| NAVPS  | \$18.9097                     |
| MER (%)<br>As at 2023-09-30                      | 2.43                          |
| Management fee (%)                               | 2.00                          |
| Asset class                                      | U.S. Equity                   |
| Currency   | USD                           |
| Minimum investment                               | \$500 initial/\$25 additional |
| Distribution frequency                           | Quarterly                     |
| Last distribution                                | \$0.5303                      |

## Risk rating<sup>1</sup>



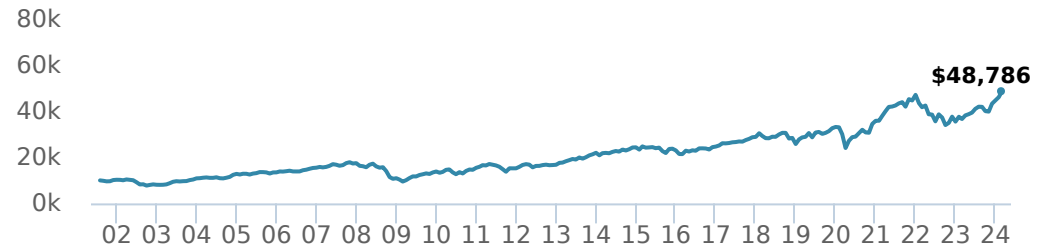
## FUND CODES

|   |             |
|---|-------------|
| A | ISC 512     |
|   | DSC S0* 513 |
|   | LL S0 1513  |
| E | 17122       |
| F | 515         |
| I | 5500        |
| O | 19122       |
| P | 90318       |

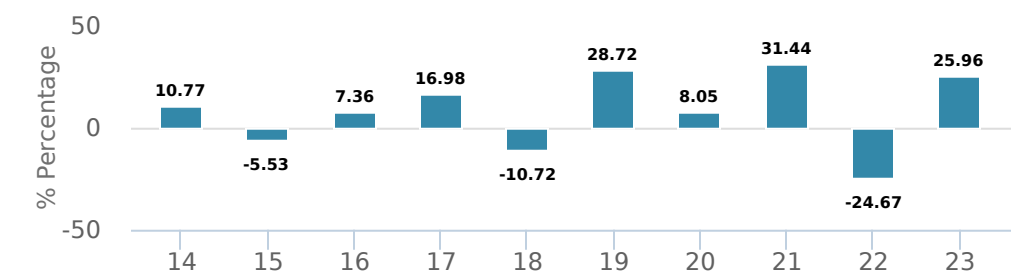
\*No new purchases directly into switch only funds.

## PERFORMANCE<sup>2</sup>

Growth of \$10,000 (since inception date)



## Calendar year performance



## Average annual compound returns

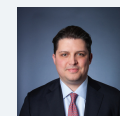
| YTD   | 1 Mo  | 3 Mo   | 6 Mo   | 1 Y    | 3 Y   | 5 Y    | 10 Y  | Inception* |
|-------|-------|--------|--------|--------|-------|--------|-------|------------|
| 8.92% | 5.58% | 12.52% | 16.20% | 33.00% | 8.71% | 11.20% | 8.37% | 7.27%      |

\*Since inception date

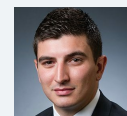
## DISTRIBUTION HISTORY<sup>3</sup>

| Payable date | Total  | Payable date | Total  |
|--------------|--------|--------------|--------|
| 2022-12-16   | 0.5303 | 2020-12-18   | 0.1989 |
| 2022-09-23   | 0.5405 | 2020-09-25   | 0.1846 |
| 2022-06-24   | 0.5404 | 2020-06-26   | 0.0358 |
| 2022-03-25   | 0.9572 | 2020-03-20   | 0.2448 |
| 2021-03-26   | 0.3357 | 2019-12-13   | 0.1749 |

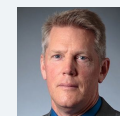
## MANAGEMENT TEAM



Greg Quickmire



Jeremy Rosa



Peter Hofstra

# CI U.S. Stock Selection Corporate Class

Series A USD



AS AT FEBRUARY 29, 2024

## PORTFOLIO ALLOCATIONS<sup>4</sup>

| Asset allocation     | (%)          | Sector allocation        | (%)          | Geographic allocation | (%)          |
|----------------------|--------------|--------------------------|--------------|-----------------------|--------------|
| US Equity            | <b>95.48</b> | Technology               | <b>53.43</b> | United States         | <b>95.46</b> |
| International Equity | <b>4.75</b>  | Healthcare               | <b>28.06</b> | Denmark               | <b>2.72</b>  |
| Other                | <b>0.01</b>  | Consumer Services        | <b>9.66</b>  | Taiwan                | <b>1.17</b>  |
| Cash and Equivalents | <b>-0.24</b> | Financial Services       | <b>6.42</b>  | United Kingdom        | <b>0.86</b>  |
|                      |              | Consumer Goods           | <b>2.66</b>  | Other                 | <b>0.01</b>  |
|                      |              | Other                    | <b>0.01</b>  | Canada                | <b>-0.22</b> |
|                      |              | Cash and Cash Equivalent | <b>-0.24</b> |                       |              |

## TOP HOLDINGS

|                            | Sector                 | (%)           |
|----------------------------|------------------------|---------------|
| 1. Microsoft Corp          | Information Technology | <b>10.25%</b> |
| 2. NVIDIA Corp             | Computer Electronics   | <b>7.18%</b>  |
| 3. Apple Inc               | Computer Electronics   | <b>6.53%</b>  |
| 4. Amazon.com Inc          | Retail                 | <b>5.55%</b>  |
| 5. Alphabet Inc Cl C       | Information Technology | <b>5.24%</b>  |
| 6. Meta Platforms Inc Cl A | Information Technology | <b>4.45%</b>  |
| 7. Eli Lilly and Co        | Drugs                  | <b>4.03%</b>  |
| 8. UnitedHealth Group Inc  | Healthcare Services    | <b>4.02%</b>  |
| 9. Humana Inc              | Healthcare Services    | <b>3.83%</b>  |
| 10. Salesforce Inc         | Information Technology | <b>3.33%</b>  |
| 11. ServiceNow Inc         | Information Technology | <b>3.11%</b>  |
| 12. Costco Wholesale Corp  | Retail                 | <b>3.05%</b>  |
| 13. Merck & Co Inc         | Drugs                  | <b>3.00%</b>  |
| 14. Novo Nordisk A/S - ADR | Drugs                  | <b>2.72%</b>  |
| 15. Stryker Corp           | Healthcare Equipment   | <b>2.69%</b>  |

Note: This page is not complete without disclaimers on the next page.

**Over 35,000 financial advisors have chosen CI Global Asset Management as a partner. We believe that Canadians have the best opportunity for investments success by using the services of a professional financial advisor. [Learn more at ci.com.](#)**

<sup>1</sup> The risk level of a fund has been determined in accordance with a standardized risk classification methodology in National Instrument 81-102, that is based on the fund's historical volatility as measured by the 10-year standard deviation of the fund's returns. Where a fund has offered securities to the public for less than 10 years, the standardized methodology requires that the standard deviation of a reference mutual fund or index that reasonably approximates the fund's standard deviation be used to determine the fund's risk rating. Please note that historical performance may not be indicative of future returns and a fund's historical volatility may not be indicative of future volatility.

<sup>2</sup> Commissions, trailing commissions, management fees and expenses all may be associated with mutual fund investments. Please read the prospectus before investing. The indicated rates of return are the historical annual compounded total returns net of fees and expenses payable by the fund (except for figures of one year or less, which are simple total returns) including changes in security value and reinvestment of all dividends/distributions and do not take into account sales, redemption, distribution or optional charges or income taxes payable by any securityholder that would have reduced returns. Mutual funds are not guaranteed, their values change frequently, and past performance may not be repeated.

<sup>3</sup> Please refer to the fund's simplified prospectus for distribution information.

<sup>4</sup> Portfolio allocations will fluctuate over the life of the mutual fund as the portfolio holdings and market value of each security changes. The portfolio manager(s) may change the portfolio allocations in some or all of the sectors.

The contents are not to be used or construed as investment advice or as an endorsement or recommendation of any entity of security discussed.

Certain statements contained in this communication are based in whole or in part on information provided by third parties and CI has taken reasonable steps to ensure their accuracy.

The rates of return are used only to illustrate the effects of the compound growth rate and are not intended to reflect future values or returns on investment in an investment fund.

The "Growth of \$10,000 invested" chart shows the final value of a hypothetical \$10,000 investment in securities in this class/series of the fund as at the end of the investment period indicated and is not intended to reflect future values or returns on investment in such securities.

Management Expense Ratio ("MER") represents the trailing 12-month management expense ratio, which reflects the cost of running the fund, inclusive of applicable taxes including HST, GST and QST (excluding commissions and other portfolio transaction costs) as a percentage of daily average net asset value the period, including the fund's proportionate share of any underlying fund(s) expenses, if applicable. The MER is reported in each fund's Management Report of Fund Performance ("MRFP"). MRFPs can be found within the Documents tab on ci.com.

CI Global Asset Management is a registered business name of CI Investments Inc.

©CI Investments Inc. 2024. All rights reserved.

Published March 2024